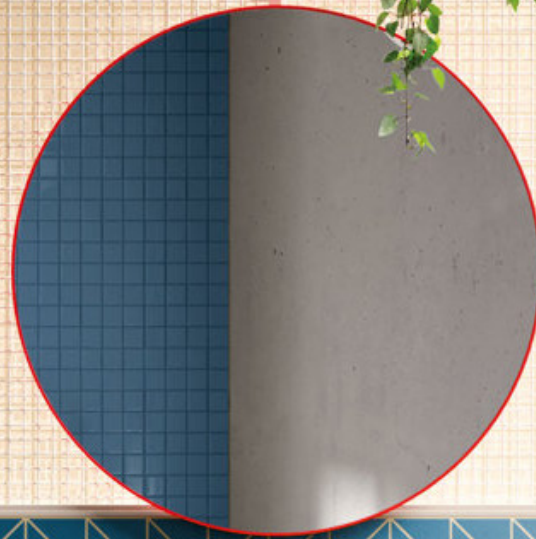


SYSTEM



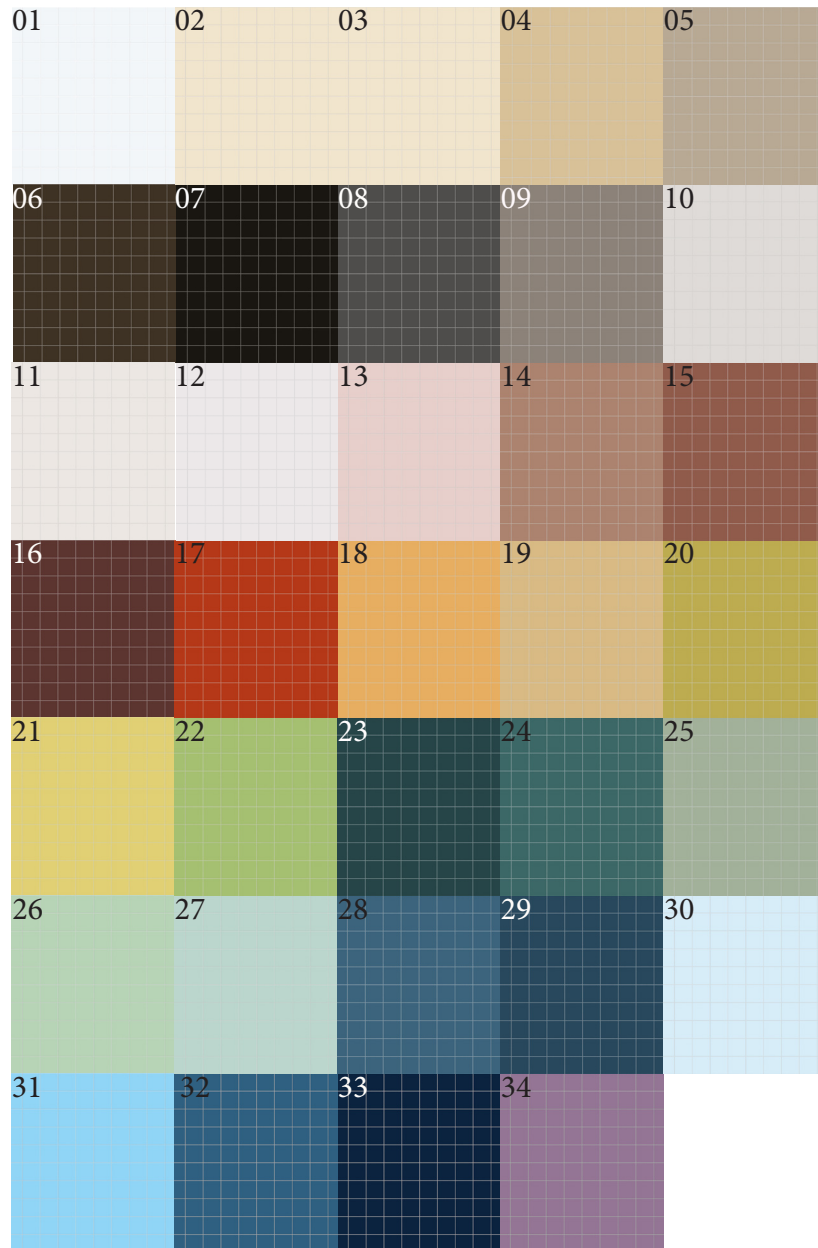
SYSTEM

System is a selection of solid Matt coloured frost proof glazed porcelain. It is available in 34 colours, 8 sizes and special pieces. This architectural system is an important compositional tool for architects, with an additional 3 systems in gloss, textured and grip, System SP is a selection of special technical pieces that can be used across the entire system.



Lead the scene, keep it green

BPBVGIN



SYSTEM I

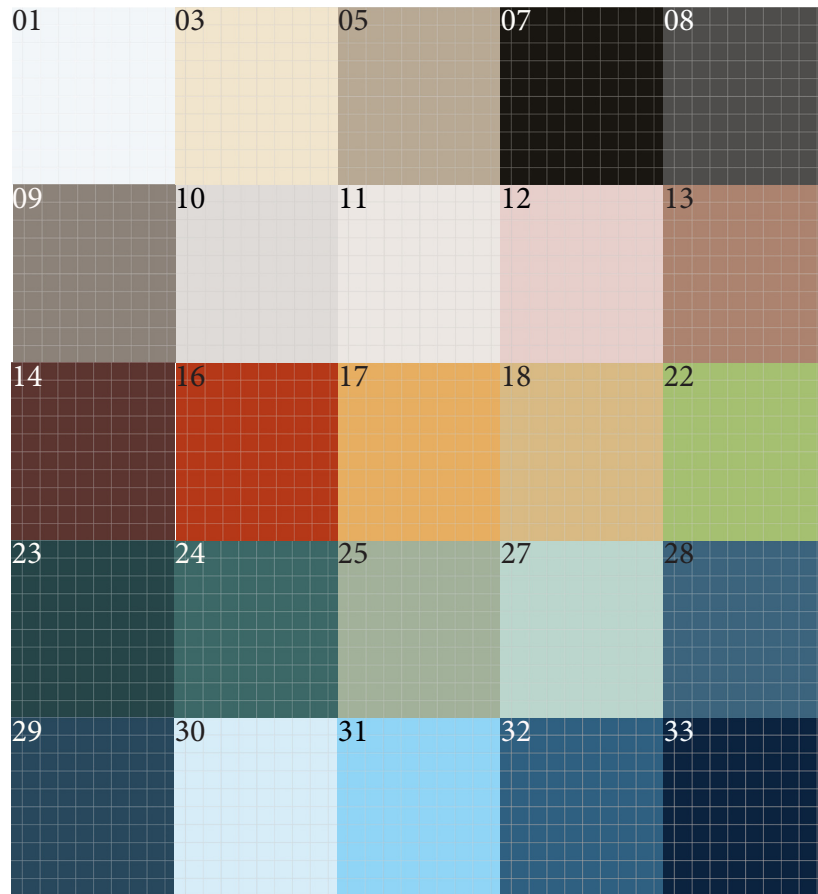


Sizes(mm)

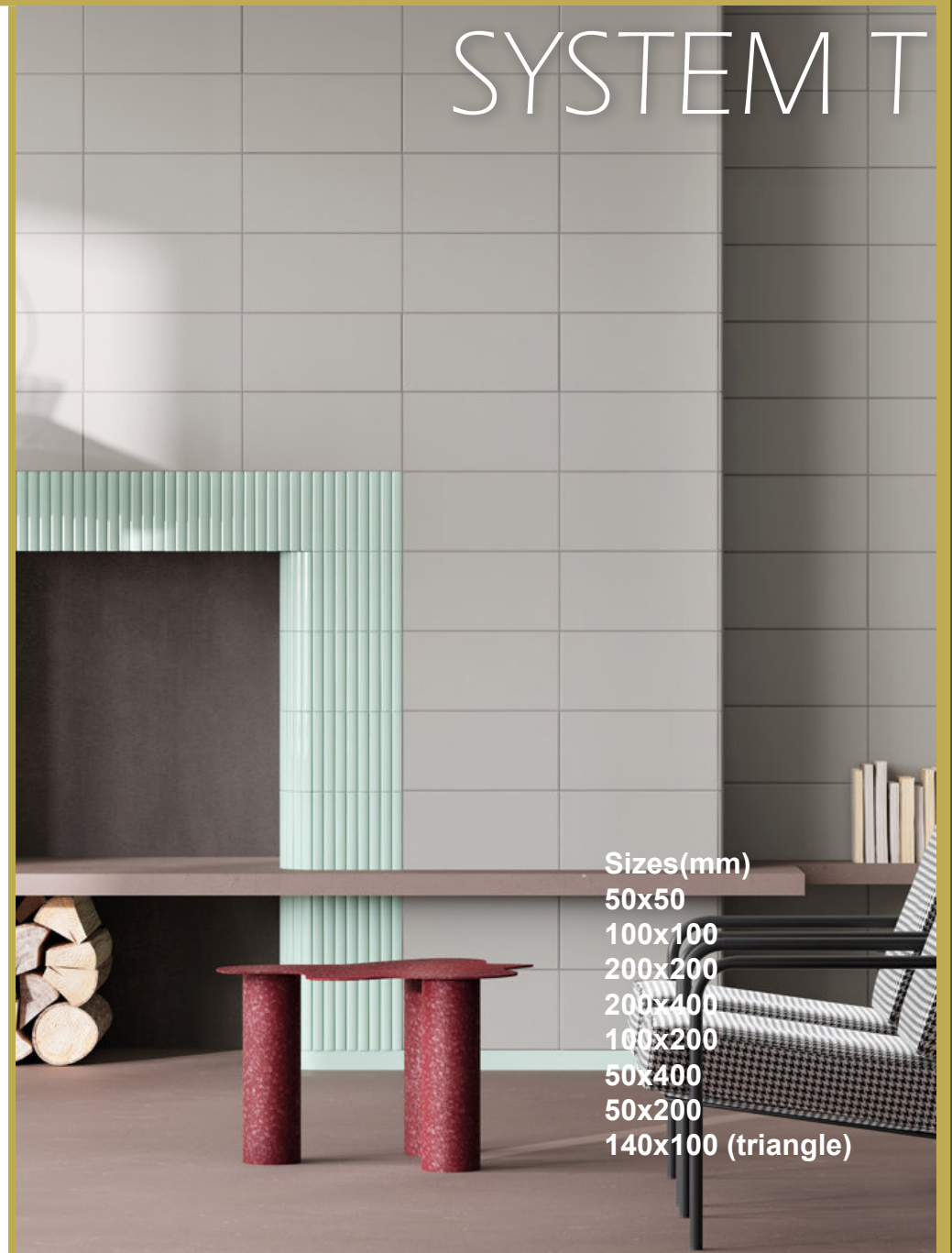
- 50x50
- 100x100
- 200x200
- 200x400
- 100x200
- 50x400
- 50x200
- 140x100 (triangle)

- Thickness 7/8.5mm
- Slip Rating R9
- Water Absorption 0.5%
- Frost Resistance Resistant
- Chemical Resistance Resistant
- Material Porcelain

BPBVGTR



SYSTEM T



Sizes(mm)

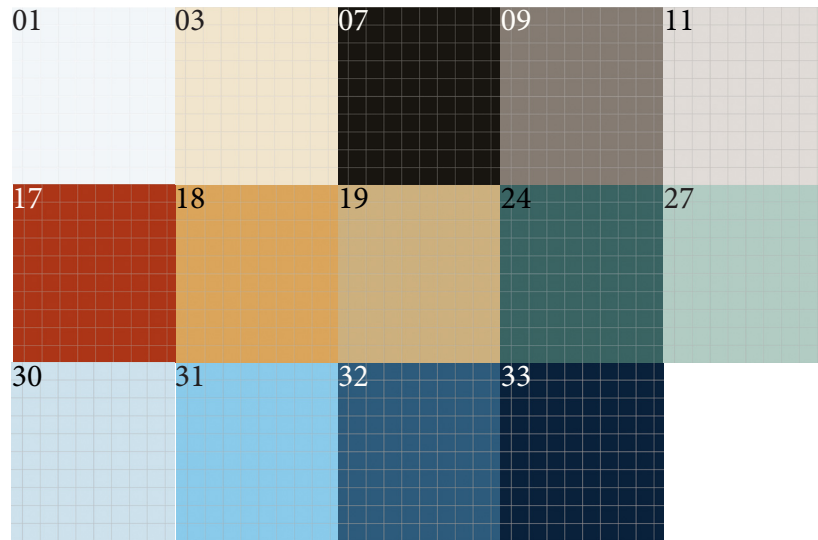
- 50x50
- 100x100
- 200x200
- 200x400
- 100x200
- 50x400
- 50x200
- 140x100 (triangle)

- Thickness 7/8.5mm
- Slip Rating N/A
- Water Absorption 0.5%
- Frost Resistance Resistant
- Chemical Resistance Resistant
- Material Porcelain



BLUE PRINT CERAMICS

BPBVGRG



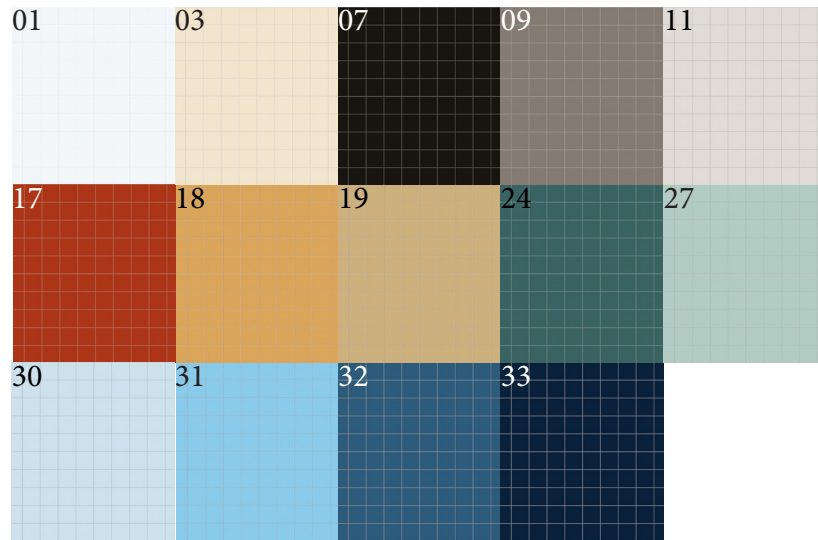
SYSTEM F



Sizes(mm)
50x50
100x100
200x200
200X400

- Thickness 7/8.5mm
- Slip Rating R10
- Water Absorption 0.5%
- Frost Resistance Resistant
- Chemical Resistance Resistant
- Material Porcelain

BPBVGRG



SYSTEM G



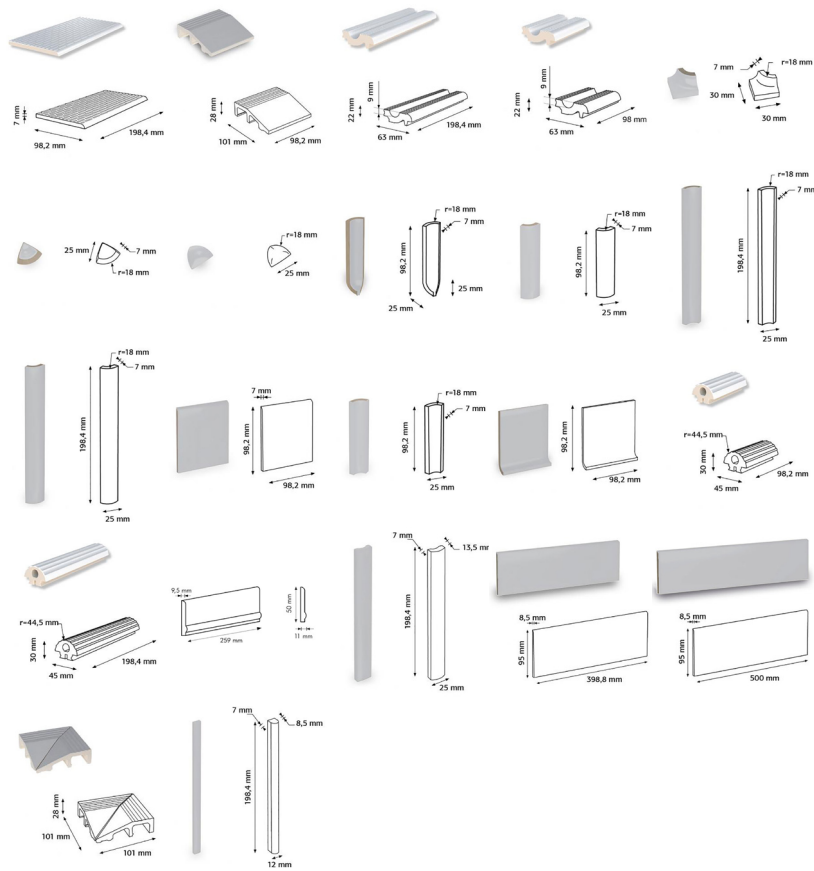
Sizes(mm)
50x50
100x100
200x200

- Thickness 7/8.5mm
- Slip Rating R11
- Water Absorption 0.5%
- Frost Resistance Resistant
- Chemical Resistance Resistant
- Material Porcelain



BLUE PRINT CERAMICS

SPECIAL PIECES



SYSTEM SP



- Thickness: Various
- Slip Rating: N/A
- Water Absorption: 0.5%
- Frost Resistance: Resistant
- Chemical Resistance: Resistant
- Material: Porcelain



BLUE PRINT CERAMICS



Lead the scene, keep it green

