

MARMO FORMA

MARBLE EFFECT PORCELAIN

12 COLOURS | 1 FINISHES | 12 FORMATS



BLUEPRINT  
CERAMICS



Marmo Forma is a porcelain tile collection that reinterprets the timeless elegance of natural marble through architectural geometry and technical performance. Designed specifically for the specification market, Marmo Forma offers a curated selection of marble-effect tiles in classic finishes such as Carrara White, Verde Guatemala, and Nero Marquina. Available in chevron, basketweave, and linear grid formats, this collection provides visual rhythm and spatial structure, ideal for both commercial and high-end residential interiors. Marmo Forma tiles are suitable for wall and floor applications, offering the durability, low porosity, and slip resistance required in modern interior architecture. With its clean geometry and rich, veined marble aesthetics, Marmo Forma bridges design intent and technical performance, making it a reliable solution for architects and interior designers specifying materials for bathrooms, lobbies, retail spaces, hospitality projects, and more. The collection is compatible with underfloor heating, easy to maintain, and available in various sizes and surface finishes. Whether used to create statement walls or unified flooring schemes, Marmo Forma brings classical inspiration into contemporary specification.

## Project Suitability

All project types internal/External Wall/  
Floors

Commercial Projects

Retail & Hospitality

Residential, Renovation & New Build

MARMO FORMA

MARBLE EFFECT PORCELAIN

12 COLOURS | 1 FINISHES | 12 FORMATS





BPMF01

- 9.5mm
- 46x46mm (Dot)
- 75x150mm
- 75x75mm
- 75x300mm
- 100x100mm
- 100x300mm
- 100x600mm
- 200x200mm (Octagon)
- 300x300mm (Pentagona)
- 600x600mm



Pentagona

**BLUEPRINT  
CERAMICS**



BPMF02

- 9.5mm
- 46x46mm (Dot)
- 75x150mm
- 75x75mm
- 75x300mm
- 100x100mm
- 100x300mm
- 100x600mm
- 200x200mm (Octagon)
- 300x300mm (Pentagona)
- 600x600mm



**BLUEPRINT**  
CERAMICS



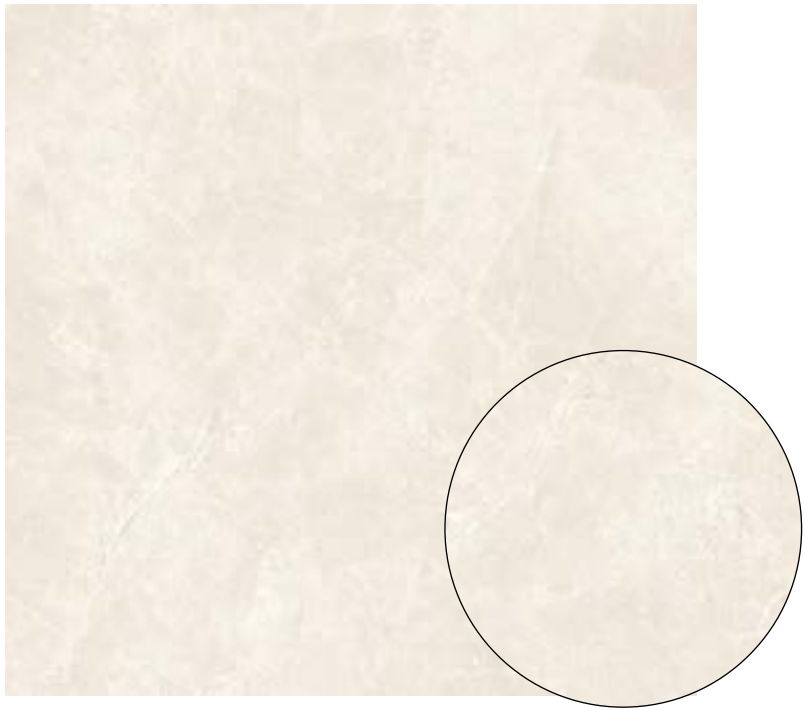
BPMF03

- 9.5mm
- 46x46mm (Dot)
- 75x150mm
- 75x75mm
- 75x300mm
- 100x100mm
- 100x300mm
- 100x600mm
- 200x200mm (Octagon)
- 300x300mm (Pentagona)
- 600x600mm



Octagon

**BLUEPRINT  
CERAMICS**



BPMF04

- 9.5mm
- 46x46mm (Dot)
- 75x150mm
- 75x75mm
- 75x300mm
- 100x100mm
- 100x300mm
- 100x600mm
- 200x200mm (Octagon)
- 300x300mm (Pentagona)
- 600x600mm



**BLUEPRINT  
CERAMICS**

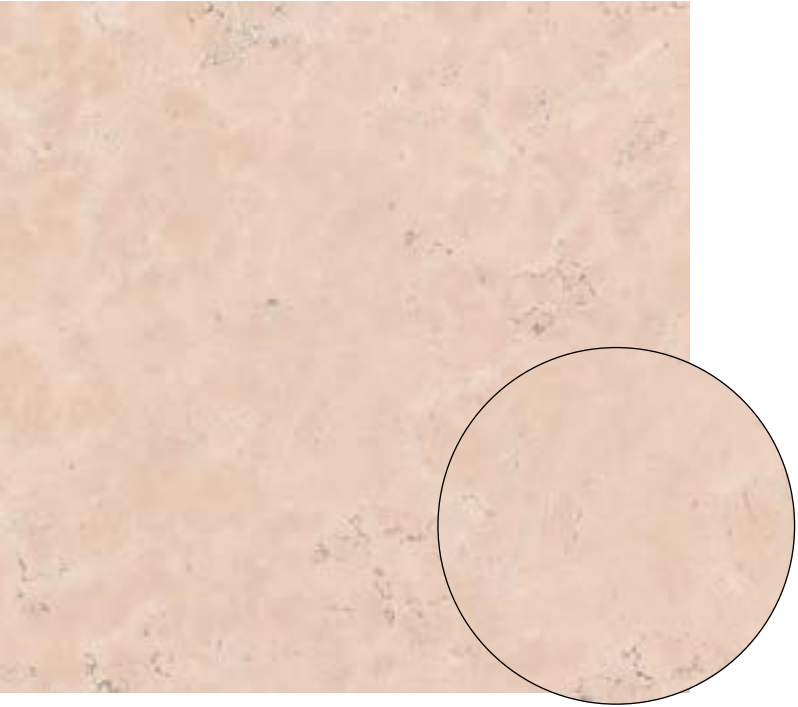


BPMF05

- 9.5mm
- 46x46mm (Dot)
- 75x150mm
- 75x75mm
- 75x300mm
- 100x100mm
- 100x300mm
- 100x600mm
- 200x200mm (Octagon)
- 300x300mm (Pentagona)
- 600x600mm



**BLUEPRINT**  
CERAMICS

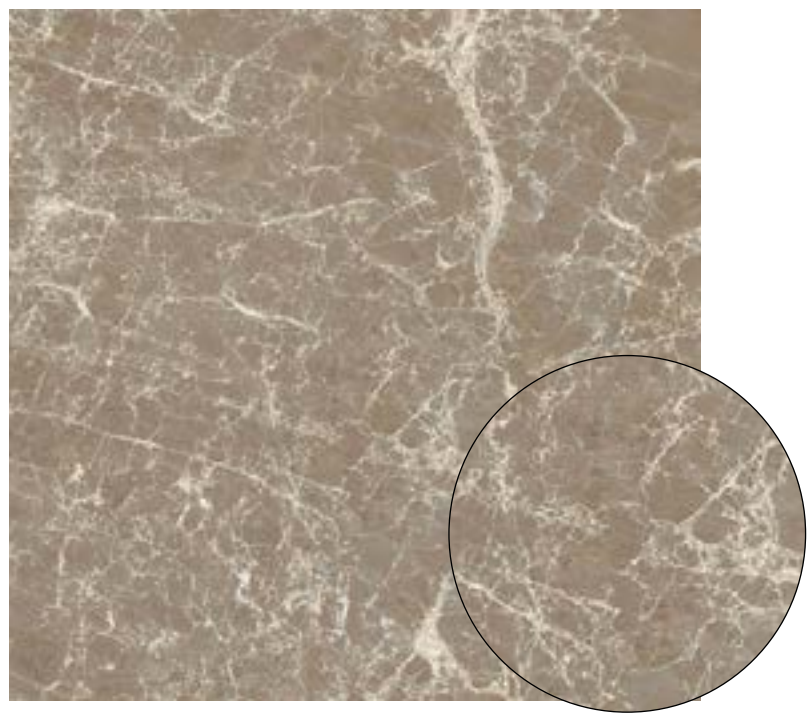


BPMF06

- 9.5mm
- 46x46mm (Dot)
- 75x150mm
- 75x75mm
- 75x300mm
- 100x100mm
- 100x300mm
- 100x600mm
- 200x200mm (Octagon)
- 300x300mm (Pentagona)
- 600x600mm



**BLUEPRINT  
CERAMICS**



BPMF07

- 9.5mm
- 46x46mm (Dot)
- 75x150mm
- 75x75mm
- 75x300mm
- 100x100mm
- 100x300mm
- 100x600mm
- 200x200mm (Octagon)
- 300x300mm (Pentagona)
- 600x600mm



**BLUEPRINT**  
CERAMICS



BPMF08

- 9.5mm
- 46x46mm (Dot)
- 75x150mm
- 75x75mm
- 75x300mm
- 100x100mm
- 100x300mm
- 100x600mm
- 200x200mm (Octagon)
- 300x300mm (Pentagona)
- 600x600mm



**BLUEPRINT  
CERAMICS**

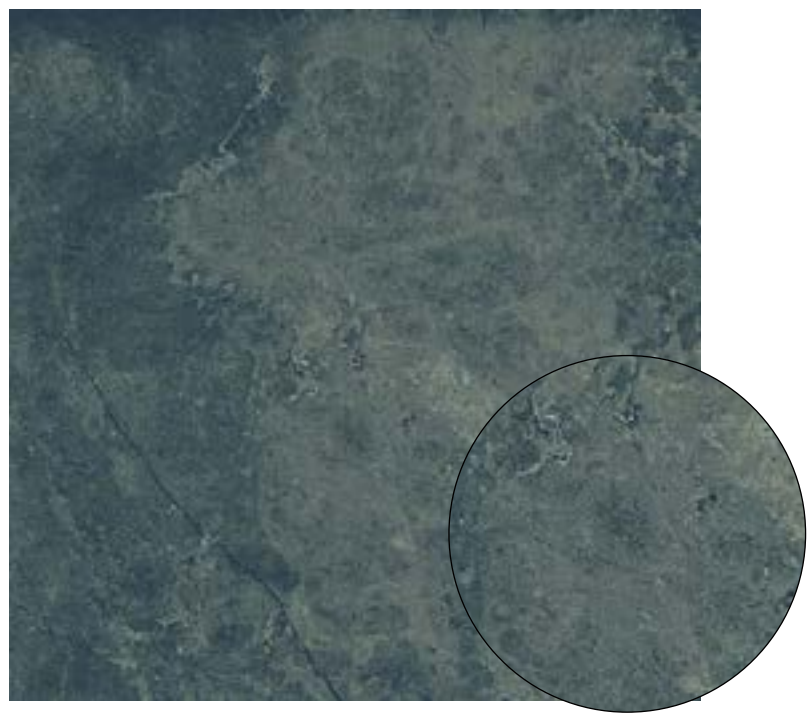


BPMF09

- 9.5mm
- 46x46mm (Dot)
- 75x150mm
- 75x75mm
- 75x300mm
- 100x100mm
- 100x300mm
- 100x600mm
- 200x200mm (Octagon)
- 300x300mm (Pentagona)
- 600x600mm



**BLUEPRINT**  
CERAMICS



BPMF10

- 9.5mm
- 46x46mm (Dot)
- 75x150mm
- 75x75mm
- 75x300mm
- 100x100mm
- 100x300mm
- 100x600mm
- 200x200mm (Octagon)
- 300x300mm (Pentagona)
- 600x600mm



**BLUEPRINT**  
CERAMICS

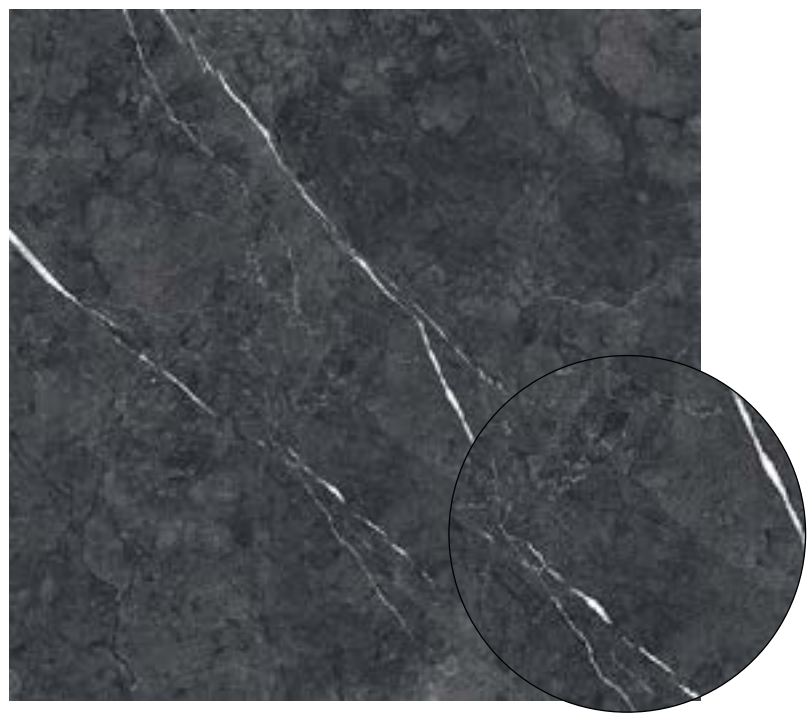


BPMF11

- 9.5mm
- 46x46mm (Dot)
- 75x150mm
- 75x75mm
- 75x300mm
- 100x100mm
- 100x300mm
- 100x600mm
- 200x200mm (Octagon)
- 300x300mm (Pentagon)
- 600x600mm



**BLUEPRINT**  
CERAMICS



BPMF12

- 9.5mm
- 46x46mm (Dot)
- 75x150mm
- 75x75mm
- 75x300mm
- 100x100mm
- 100x300mm
- 100x600mm
- 200x200mm (Octagon)
- 300x300mm (Pentagona)
- 600x600mm



**BLUEPRINT**  
CERAMICS

## TECHNICAL DATA

FINISHES

Matt

THICKNESS

9.5mm

TEST DESCRIPTION	TEST REQUIREMENT	VALUE
Sides	BS EN ISO 10545-2	Conforms
Thickness	BS EN ISO 10545-2	Conforms
Straightness of Sides	BS EN ISO 10545-2	Conforms
Rectangularity	BS EN ISO 10545-2	Conforms
Surface Flatness	BS EN ISO 10545-2	Conforms
Water Absorbtion	BS EN ISO 10545-3	0.5%
Flexion Resistance	BS EN ISO 10545-4	Conforms
Impact Resistance	BS EN ISO 10545/5	Conforms
Abrasion Resistance	BS EN ISO 10545-6	< 150 mm <sup>3</sup>
Frost Resistance	BS EN ISO 10545-12	No Damage
Chemical Resistance	BS EN ISO 10545-13	Conforms
Resistance to Stains	BS EN ISO 10545-14	5

**BLUEPRINT  
CERAMICS**