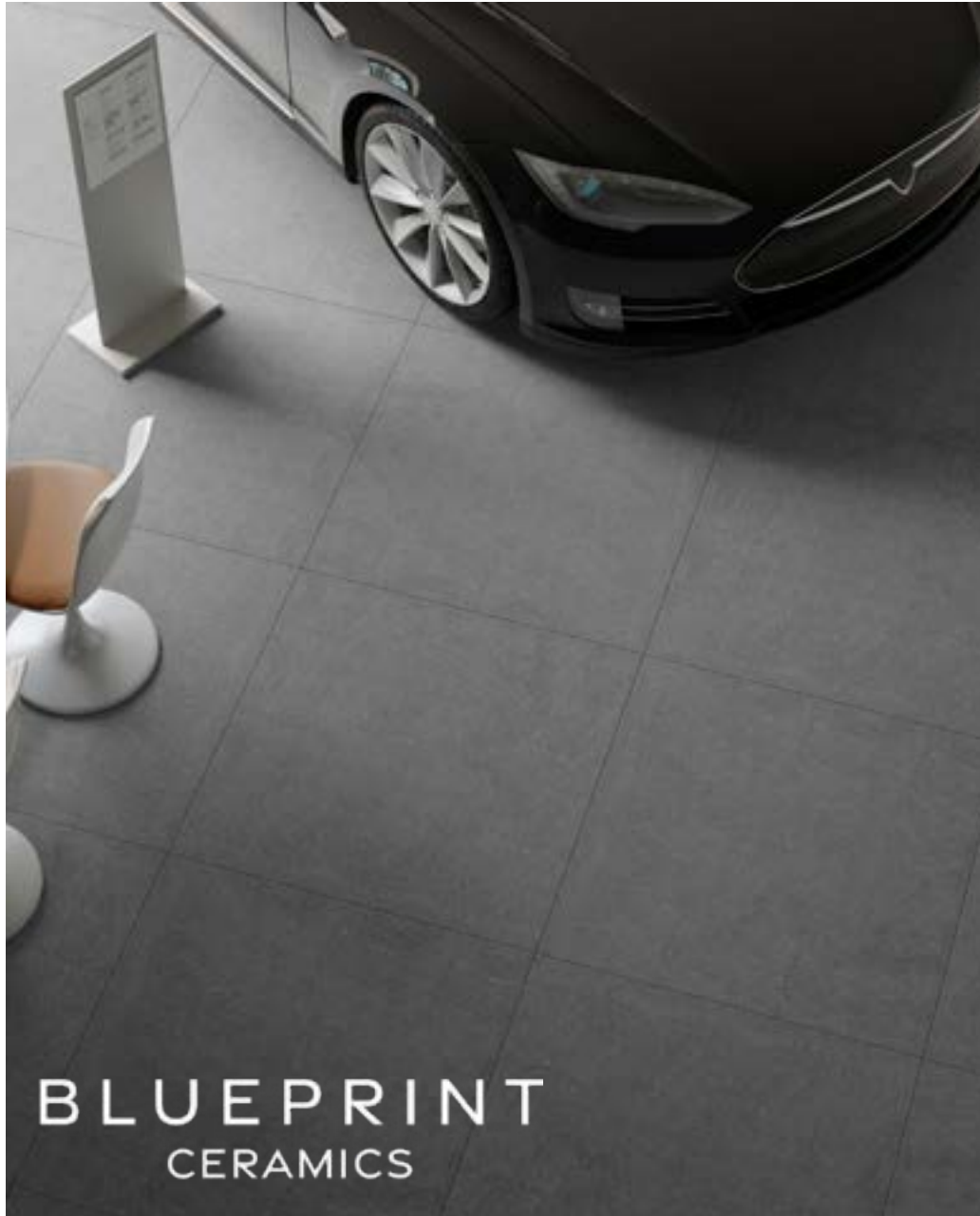


BRIDGEWATER | CONCRETE EFFECT PORCELAIN

8 COLOURS | 3 FINISHES | 2 FORMATS



BLUEPRINT
CERAMICS



The Bridgewater Tile Collection is a premium porcelain range developed to meet the demands of contemporary residential and commercial specification projects. Designed for lounges, living areas and open-plan environments, the collection combines refined aesthetics with the technical performance required for high-traffic interiors. Featuring stone, wood and modern textured finishes, Bridgewater tiles deliver the visual appeal of natural materials with the durability, consistency and low maintenance benefits of porcelain. Suitable for floor and wall applications, the range is ideal for housing developments, build-to-rent schemes, hospitality spaces and large-scale interior fit-outs. With excellent wear resistance, compatibility with underfloor heating and a selection of versatile formats, the Bridgewater Collection provides a reliable, design-led solution for architects, developers and contractors seeking long-term value and elevated interior finishes.

Project Suitability

All project types Internal/External Walls/
Floors

Commercial Projects

Retail & Hospitality

Residential, Renovation & New Build

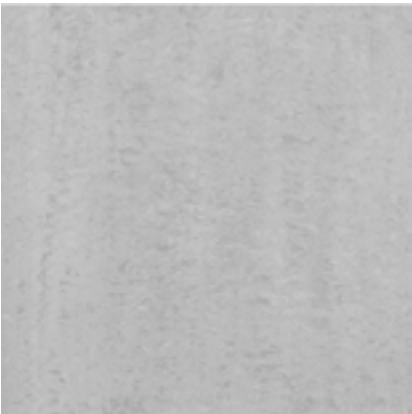
ORBIT

STONE EFFECT PORCELAIN TILES

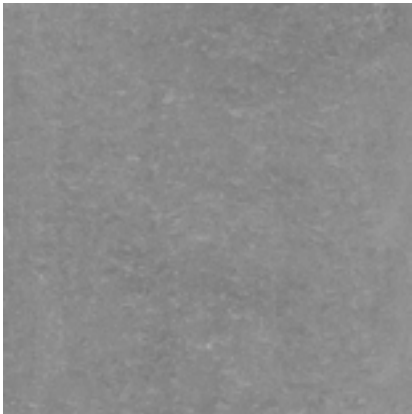
8 COLOURS | 3 FINISHES | 2 FORMATS



BPBW01



BPBW02



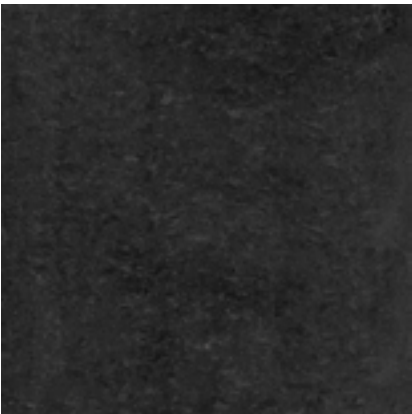
BPBW03



BPBW04



BPBW05



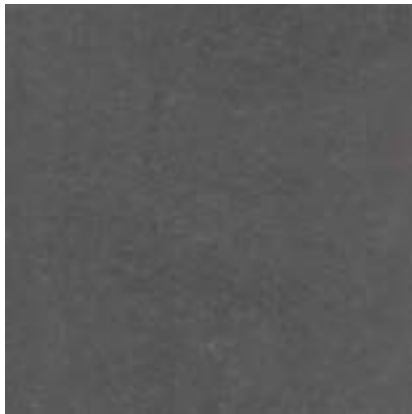
BPBW06



BPBW07



BPBW08



Sizes: 600x600, 300x600

Finishes: Matt, Polished, Grip

Slip Rating: R10, No Rating, R11

BLUEPRINT
CERAMICS

TECHNICAL DATA

FINISHES

Matt/Pol/Grip

THICKNESS

8.5/9mm

TEST DESCRIPTION	TEST REQUIREMENT	VALUE
Sides	BS EN ISO 10545-2	Conforms
Thickness	BS EN ISO 10545-2	Conforms
Straightness of Sides	BS EN ISO 10545-2	Conforms
Rectangularity	BS EN ISO 10545-2	Conforms
Surface Flatness	BS EN ISO 10545-2	Conforms
Water Absorbtion	BS EN ISO 10545-3	$\leq 0,05\%$
Flexion Resistance	BS EN ISO 10545-4	Conforms
Breaking Strength	BS EN ISO 10545/5	>2000N
Abrasion Resistance	BS EN ISO 10545-6	< 150 mm 3
Frost Resistance	BS EN ISO 10545-12	Resistant
Chemical Resistance	BS EN ISO 10545-13	Conforms
Resistance to Stains	BS EN ISO 10545-14	Resistant

**BLUEPRINT
CERAMICS**