

ZERO 2.0

CONCRETE EFFECT PORCELAIN

6 COLOURS | 3 FINISHES | 4 FORMATS



ZERO 2.0

CONCRETE EFFECT PORCELAIN TILES

6 COLOURS | 3 FINISHES | 4 FORMATS



The Zero 2.0 Tile Collection is a contemporary porcelain range developed for architectural specification and modern interior design. Inspired by minimal surfaces and refined cement-effect aesthetics, Zero 2.0 delivers a clean, understated finish suited to both residential and commercial environments. Engineered for performance, the collection offers excellent durability, low maintenance and design consistency, making it ideal for high-traffic interiors, open-plan living spaces, hospitality schemes and large-scale development projects. With a balanced palette of modern neutral tones and versatile formats, Zero 2.0 provides architects, designers and contractors with a reliable surface solution for sophisticated interiors.

### Project Suitability

All project types Internal/External Walls/  
Floors

Commercial Projects

Retail & Hospitality

Residential, Renovation & New Build

ZERO 2.0

CONCRETE EFFECT PORCELAIN

6 COLOURS | 3 FINISHES | 4 FORMATS



ZERO 2.0

CONCRETE EFFECT PORCELAIN TILES

8 COLOURS | 3 FINISHES | 2 FORMATS

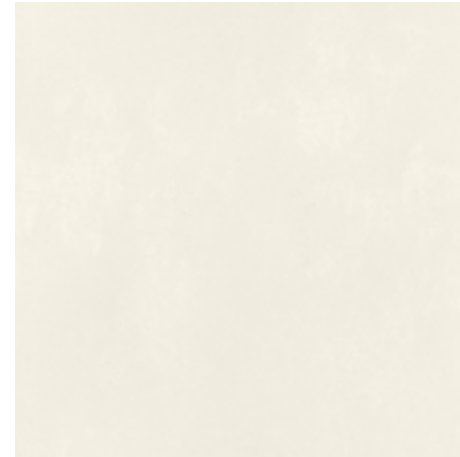
BPZR01



BPZR02



BPZR03



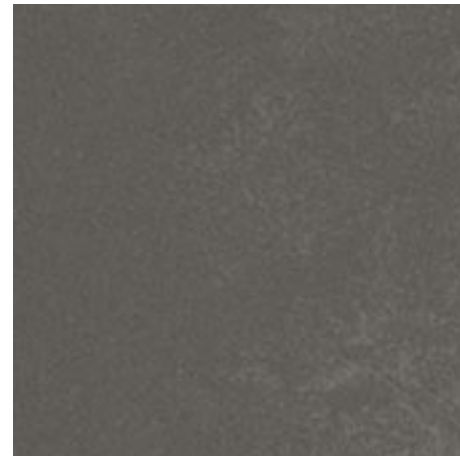
BPZR04



BPZR05



BPZR06



Sizes: 1200x1200, 600x1200, 600x600,  
300x600

Finishes: Matt, Grip, Polished,

Slip Rating: R10, R11, No Rating,

**BLUEPRINT**  
CERAMICS

## TECHNICAL DATA

FINISHES

Matt/Pol/Grip

THICKNESS

10mm

TEST DESCRIPTION	TEST REQUIREMENT	VALUE
Sides	BS EN ISO 10545-2	Conforms
Thickness	BS EN ISO 10545-2	Conforms
Straightness of Sides	BS EN ISO 10545-2	Conforms
Rectangularity	BS EN ISO 10545-2	Conforms
Surface Flatness	BS EN ISO 10545-2	Conforms
Water Absorbtion	BS EN ISO 10545-3	$\leq 0,1\%$
Flexion Resistance	BS EN ISO 10545-4	$> 45 \text{ N/mm}^2$
Breaking Strength	BS EN ISO 10545/5	$>2000\text{N}$
Abrasion Resistance	BS EN ISO 10545-6	$< 150 \text{ mm}^3$
Frost Resistance	BS EN ISO 10545-12	Resistant
Chemical Resistance	BS EN ISO 10545-13	Conforms
Resistance to Stains	BS EN ISO 10545-14	Resistant

**BLUEPRINT  
CERAMICS**