

URBAN IRON





URBAN IRON

Urban Iron is a raw porcelain tile collection of porcelain tiles that leave us with influences of urban living and warehouse & industrial styling. The industrial styled porcelain tiles offer a palette of metallic hues with subtle variations that create contemporary urban design features. Three formats are available including a large slab option.







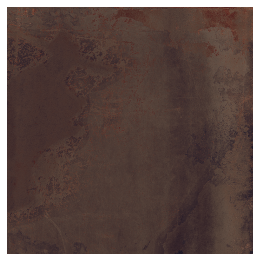
BPBIMUI01

600x600mm Matt R9 10mm↓
600x1200mm Matt R9 6.5mm↓
1200x1200mm Matt R9 6.5mm↓



BPBIMUI02

600x600mm Matt R9 10mm↓
600x1200mm Matt R9 6.5mm↓
1200x1200mm Matt R9 6.5mm↓



BPBIMUI03

600x600mm Matt R9 10mm↓
600x1200mm Matt R9 6.5mm↓
1200x1200mm Matt R9 6.5mm↓



BPBIMUI04

600x600mm Matt R9 10mm↓
600x1200mm Matt R9 6.5mm↓
1200x1200mm Matt R9 6.5mm↓



BPBIMUI05

1200x2600mm Matt R9 6.5mm↓



BPBIMUI06

1200x2600mm Matt R9 6.5mm↓



● Thickness	6.5mm/10mm	● Frost Resistance	Resistant
● Slip Rating	R9	● Chemical Resistance	Resistant
● Water Absorption	0.05%	● Material	Porcelain

