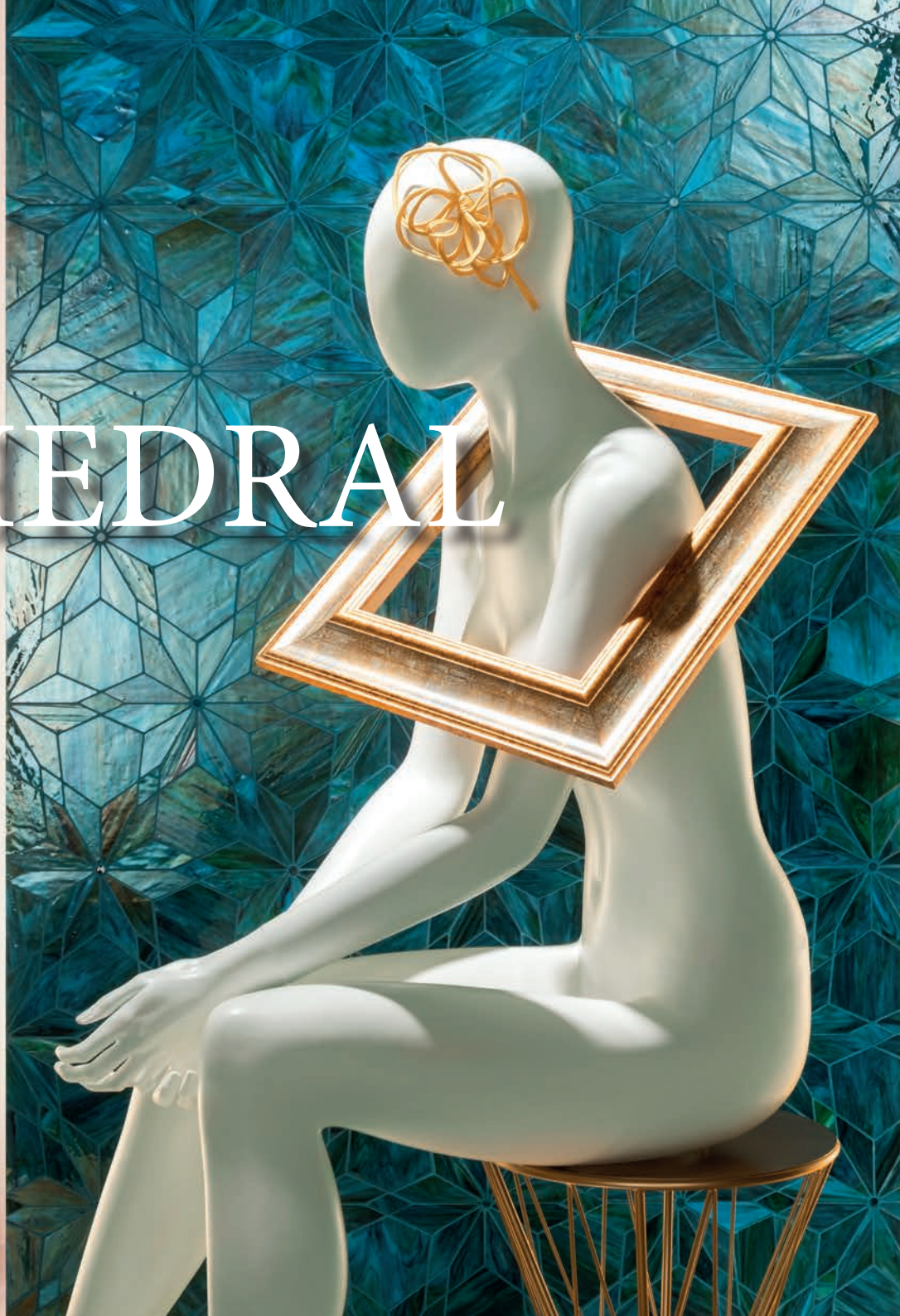


CATHEDRAL





CATHEDRAL

Cathedral is a decorative glass mosaic collection that represents the look of magnificent stained-glass windows typical to grand churches or cathedrals. The diamond formations create breath-taking statements and the colours combined with different grouts can become something utterly magical.



Lead the scene, keep it green







Colours



BPBMPCD01



BPBMPCD02



BPBMPCD03



BPBMPCD04



BPBMPCD05



BPBMPCD06



BPBMPCD07



BPBMPCD08

- Thickness 3mm
- Slip Rating N/A
- Size 365x210mm
- Material Glass

CATHEDRAL





Lead the scene, keep it green

