



DTILE

DTILE

Exclusive to BluePrint Ceramics, DTile® is an extensive range of 'function' and 'construction' tiles. These tiles integrate with the 150x150 base tiles so that the tile pattern is uninterrupted. The 'function' tiles include drain plugs, towel holders and shelves, whereas the 'construction' tiles consist of various curved pieces which allow for continuous three-dimensional constructions. Each special piece and base tile is available in 20 colours listed below.



Lead the scene, keep it green







DTILE

BPBDT01



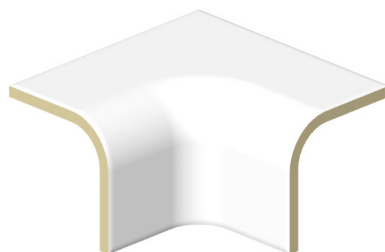
BPBDT02



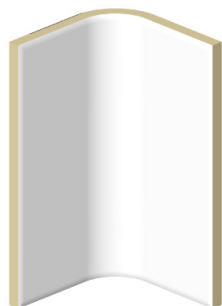
BPBDT03



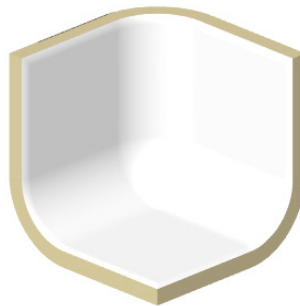
BPBDT04



BPBDT05



BPBDT06



Thickness	8mm	Frost Resistance	Resistant
Slip Rating	No Rating	Chemical Resistance	Resistant
Water Absorption	10%	Material	Ceramic



**BLUEPRINT
CERAMICS**

BPBDT07



BPBDT08



BPBDT09



BPBDT10



BPBDT11



BPBDT12



DTILE



Thickness	8mm	Frost Resistance	Resistant
Slip Rating	No Rating	Chemical Resistance	Resistant
Water Absorption	10%	Material	Ceramic



BLUEPRINT
CERAMICS

BPBDT13



● Thickness	8mm	● Frost Resistance	Resistant
● Slip Rating	No Rating	● Chemical Resistance	Resistant
● Water Absorption	10%	● Material	Ceramic



**BLUEPRINT
CERAMICS**

Chestnut	Dandelion	Dew	Fava	Fire Fighter
				
Graphite	Grass	Herring	Ivory	Jet Black
				
Night	Pigeon	Piglet	Plum	Prussia
				
Roast Almond	Sand	Sea	Sky	Snow
				

150x150mm



DTILE

- Thickness 8mm
- Slip Rating No Rating
- Water Absorption 10%
- Frost Resistance Resistant
- Chemical Resistance Resistant
- Material Ceramic



BLUEPRINT
CERAMICS



Lead the scene, keep it green

