

DIGBETH | OXIDISED PORCELAIN TILES

6 COLOURS | 2 FINISHES | 7 FORMATS



BLUEPRINT
CERAMICS



Inspired by the historic industrial district of Digbeth, Birmingham, this porcelain tile collection channels the raw energy and textured beauty of reimagined urban spaces. Fused with contemporary design sensibility, each tile emulates aged metals, oxidized finishes, and weathered surfaces—perfect for loft apartments, retail interiors, and modern architecture. With five unique colorways—Brown, Grey, Corten, White, and Blue—the Digbeth collection offers versatility in tone while maintaining an industrial edge. Whether you’re designing a feature wall, open-plan kitchen, or boutique commercial space, Digbeth tiles bring history, attitude, and texture to your surfaces.

Project Suitability

All project types Internal & External
Commercial Projects
Retail & Hospitality
Residential, Renovation & New Build

DIGBETH

OXIDISED PORCELAIN TILES

6 COLOURS | 2 FINISHES | 7 FORMATS





BPDG01

- 300x600mm
- 600x1200mm
- 600x1800mm
- 600x600mm
- 900x900mm
- 1200x1200mm



BPDG07

73x296mm
Matt



BLUEPRINT
CERAMICS



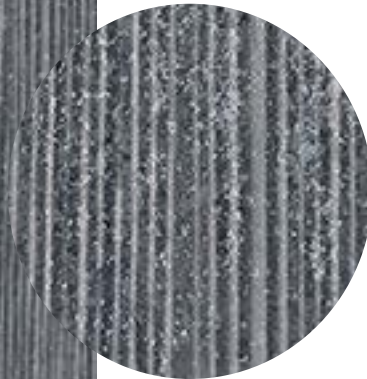
BPDG02

- 300x600mm
- 600x1200mm
- 600x1800mm
- 600x600mm
- 900x900mm
- 1200x1200mm



BPDG08

73x296mm
Matt

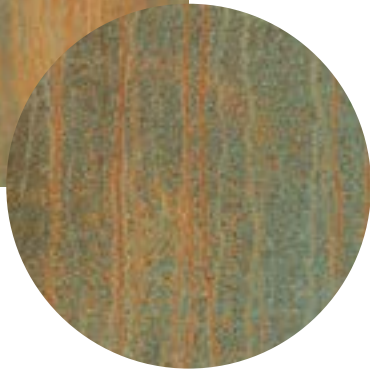


BLUEPRINT
CERAMICS



BPDG03

- 300x600mm
- 600x1200mm
- 600x1800mm
- 600x600mm
- 900x900mm
- 1200x1200mm



BPDG09

73x296mm
Matt



BLUEPRINT
CERAMICS



BPDG04

- 300x600mm
- 600x1200mm
- 600x1800mm
- 600x600mm
- 900x900mm
- 1200x1200mm



BPDG10

73x296mm
Matt



BLUEPRINT
CERAMICS



BPDG05

- 300x600mm
- 600x1200mm
- 600x1800mm
- 600x600mm
- 900x900mm
- 1200x1200mm



BPDG11

73x296mm
Matt



BLUEPRINT
CERAMICS



BPDG06

- 300x600mm
- 600x1200mm
- 600x1800mm
- 600x600mm
- 900x900mm
- 1200x1200mm



BPDG12

73x296mm
Matt



BLUEPRINT
CERAMICS

TECHNICAL DATA

FINISHES

MATT R10

THICKNESS

9mm

TEST DESCRIPTION	TEST REQUIREMENT	VALUE
Sides	BS EN ISO 10545-2	CONFORMS
Thickness	BS EN ISO 10545-2	CONFORMS
Straightness of Sides	BS EN ISO 10545-2	CONFORMS
Rectangularity	BS EN ISO 10545-2	CONFORMS
Surface Flatness	BS EN ISO 10545-2	CONFORMS
Water Absorbption	BS EN ISO 10545-3	≤ 0.1%
Breaking Strength	BS EN ISO 10545-4	CONFORMS
Impact Resistance	BS EN ISO 10545/5	CONFORMS
Abrasion Resistance	BS EN ISO 10545-6	N/A
Frost Resistance	BS EN ISO 10545-12	CONFORMS
Chemical Resistance	BS EN ISO 10545-13	Conforms
Resistance to Stains	BS EN ISO 10545-14	Comforms

**BLUEPRINT
CERAMICS**